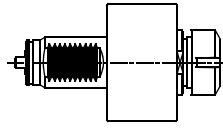


MURATEC MT-20 / MT-25

Higher precision : 0,005 mm runout

MU.000.MT20

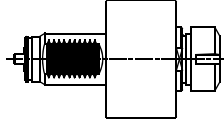
AXIAL



ER-32
RATIO 1:1
4.000 RPM MAX.

MU.005.MT20

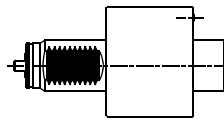
**AXIAL WITH
HIGH PRESSURE
COOLANT THROUGH**



ER-32
RATIO 1:1
4.000 RPM MAX.

MU.005.MT20/2

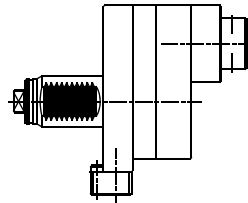
**AXIAL WITH
HIGH PRESSURE
COOLANT THROUGH**



WELDON Ø25
RATIO 1:1
4.000 RPM MAX.

MU.001.MT20A

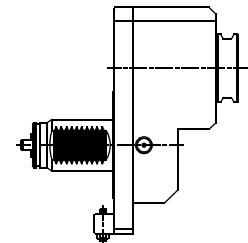
AXIAL OFFSET



ABS-40
RATIO 1:1
4.000 RPM MAX.

MU.001.MT20B

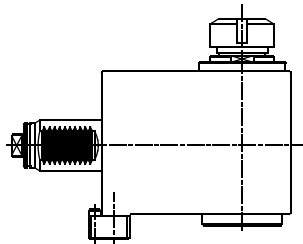
AXIAL OFFSET



ER-32A
RATIO 1:1
4.000 RPM MAX.

MU.010.MT20

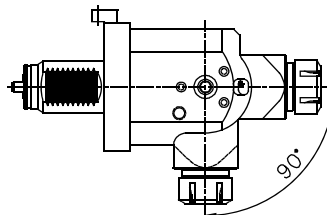
RADIAL



ER-32
RATIO 1:1
4.000 RPM MAX.

MU.021.MT20

**RADIAL
ADJUSTABLE**



ER-25
RATIO 1:1
4.000 RPM MAX.



Tooling for : BIGLIA - CMZ - DOOSAN - DUPLOMATIC - EMCO - HAAS - INDEX - MAZAK - MIYANO - MORI SEIKI - NAKAMURA - OKUMA - SAUTER - SCHAUBLIN - SPINNER - ETC.

MADAULA GROUP

Chicago - São Paulo

Barcelona - Bologna - Waghäusel

hello@madaula.com

Specials : welcome

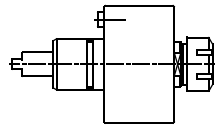


MURATEC MT-12

Higher precision : 0,005 mm runout

MU.000.MT12

AXIAL

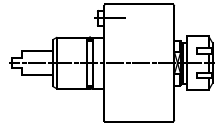


ER-25
RATIO 1:1
5.000 RPM MAX.



MU.005.MT12

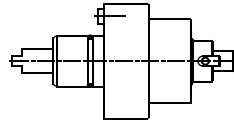
**AXIAL WITH
HIGH PRESSURE
COOLANT THROUGH**



ER-25
RATIO 1:1
5.000 RPM MAX.

MU.038.MT12

**AXIAL
SAW-MILL**

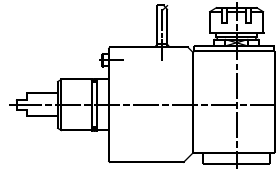


Ø 16
RATIO 1:1
5.000 RPM MAX.



MU.010.MT12

RADIAL

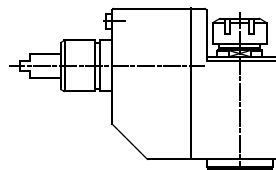


ER-25
RATIO 1:1
5.000 RPM MAX.



MU.011.MT12

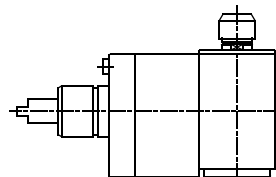
**RADIAL
SET-BACK**



ER-25
RATIO 1:1
5.000 RPM MAX.

MU.013.MT12

RADIAL SPEEDER



ER-20
RATIO 1:2
8.000 RPM MAX.



Tooling for : BIGLIA - CMZ - DOOSAN - DUPLOMATIC - EMCO - HAAS - INDEX - MAZAK - MIYANO - MORI SEIKI - NAKAMURA - OKUMA - SAUTER - SCHAUBLIN - SPINNER - ETC.

MADAULA GROUP

Chicago - São Paulo

Barcelona - Bologna - Waghäusel

hello@madaula.com

Specials : welcome

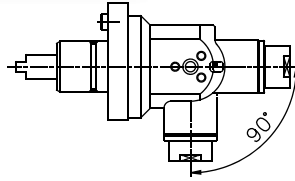


MURATEC MT-12

Higher precision : 0,005 mm runout

MU.021.MT12

**RADIAL
ADJUSTABLE**

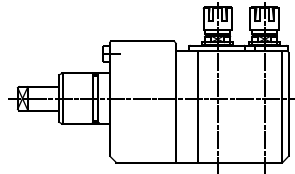


ER-16 / ER-20
RATIO 1:1
5.000 RPM MAX.



MU.029.MT12

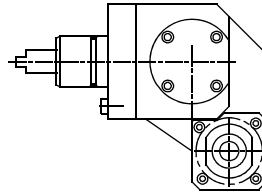
**RADIAL
4 SPINDLES**



ER-16
RATIO 1:1
5.000 RPM MAX.

MU.030.MT12A

**SAW-MILL
REDUCER**

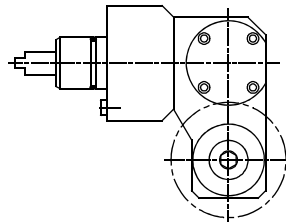


ER-20A
RATIO 2.5:1
2.000 RPM MAX.



MU.030.MT12B

**SAW-MILL
REDUCER**

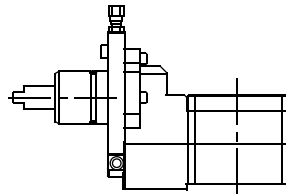


Ø 22
RATIO 2.5:1
2.000 RPM MAX.



MU.035.MT12

**THREAD
WHIRLING
REDUCER ± 15°**

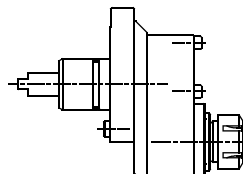


Cutter head
RATIO 2:1
3.000 RPM MAX.



MU.050.MT12

"Y" AXIS ± 15 mm



ER-25
RATIO 1:1
5.000 RPM MAX.

Tooling for : BIGLIA - CMZ - DOOSAN - DUPLOMATIC - EMCO - HAAS - INDEX - MAZAK - MIYANO - MORI SEIKI - NAKAMURA - OKUMA - SAUTER - SCHAUBLIN - SPINNER - ETC.

MADAULA GROUP

Chicago - São Paulo

Barcelona - Bologna - Waghäusel

hello@madaula.com

Specials : welcome

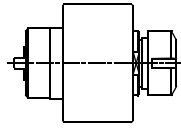


MURATEC MD-200

Higher precision : 0,005 mm runout

MU.000.MD200

AXIAL

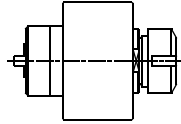


ER-32
RATIO 1:1
4.000 RPM MAX.



MU.005.MD200

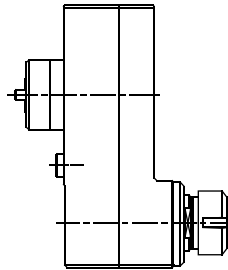
**AXIAL WITH
HIGH PRESSURE
COOLANT THROUGH**



ER-32
RATIO 1:1
4.000 RPM MAX.

MU.001.MD200

AXIAL OFFSET

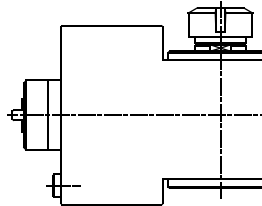


ER-32
RATIO 1:1
4.000 RPM MAX.



MU.010.MD200

RADIAL

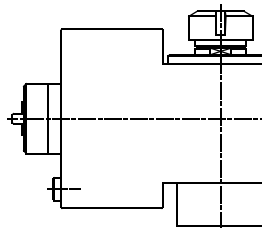


ER-32
RATIO 1:1
4.000 RPM MAX.



MU.016.MD200

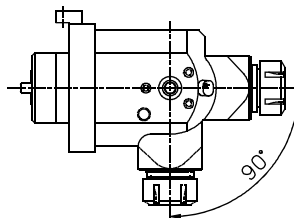
**RADIAL WITH
HIGH PRESSURE
COOLANT THROUGH**



ER-32
RATIO 1:1
4.000 RPM MAX.

MU.021.MD200

**RADIAL
ADJUSTABLE**



ER-25
RATIO 1:1
4.000 RPM MAX.



Tooling for : BIGLIA - CMZ - DOOSAN - DUPLOMATIC - EMCO - HAAS - INDEX - MAZAK - MIYANO - MORI SEIKI - NAKAMURA - OKUMA - SAUTER - SCHAUBLIN - SPINNER - ETC.

MADAULA GROUP

Chicago - São Paulo

Barcelona - Bologna - Waghäusel

hello@madaula.com

Specials : welcome

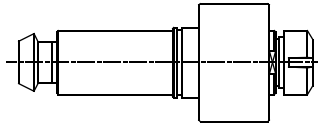


MURATEC MW-200

Higher precision : 0,005 mm runout

MU.000.MW200

AXIAL

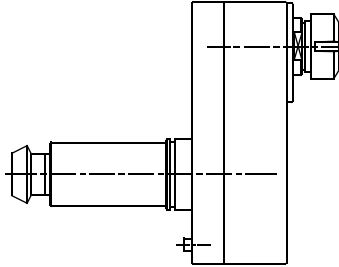


ER-32
RATIO 1:1
4.000 RPM MAX.



MU.001.MW200

**AXIAL
OFFSET**

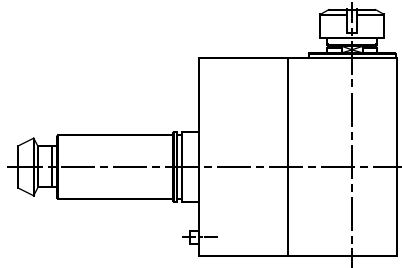


ER-32
RATIO 1:1
4.000 RPM MAX.



MU.010.MW200A

RADIAL

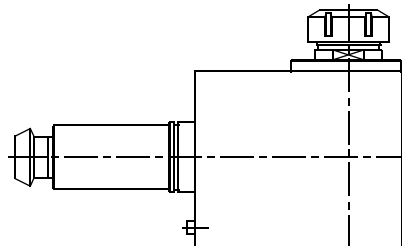


ER-32
RATIO 1:1
4.000 RPM MAX.



MU.010.MW200B

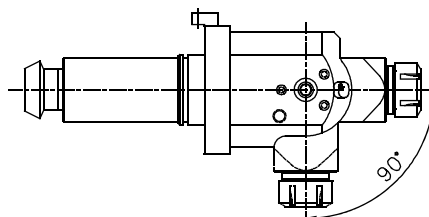
RADIAL



ER-40
RATIO 1:1
4.000 RPM MAX.

MU.021.MW200

**RADIAL
ADJUSTABLE**



ER-25
RATIO 1:1
4.000 RPM MAX.



Tooling for : BIGLIA - CMZ - DOOSAN - DUPLOMATIC - EMCO - HAAS - INDEX - MAZAK - MIYANO - MORI SEIKI - NAKAMURA - OKUMA - SAUTER - SCHAUBLIN - SPINNER - ETC.

MADAULA GROUP

Chicago - São Paulo

Barcelona - Bologna - Waghäusel

hello@madaula.com

Specials : welcome

