



EZ Shrink Pack 2.1

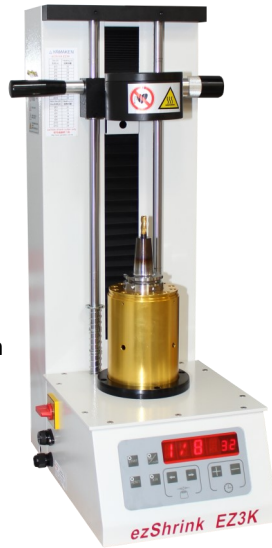
Complete Shrink Fit Heating & Water Cooling System



What's Included in the Package:

EZ Shrink Unit

- * #EZ-SHRINK-EZ3K
- * 1/8-3/4 Capacity (1-1/4 with Optional Coil)
- * 220V, 20A Single Phase Power
- * 3kw Output
- * For tools with up to a 12.50 Projection
- * 1 Year Limited Warranty
- * **30 Second Cycle Time**



EZ Cooling Unit

- * #EZ-COOL-EZ3W-KIT
- * Water Cooling with Shop Coolant (Water Based)
- * Separate Cooling, cool 1st tool while heating the 2nd
- * 110V, 16A
- * 1 Year Limited Warranty
- * **30 Second Cycle Time**



(2) EZ-Base
Tool Holder Base



EZ-COOL-EXT
Cooling Extension



EZ-GLOVE
Safety Gloves



EZ-TOOL-TRAY
Cutter Storage Tray

(5) Shrink Fit Holders

Pick any 5 standard length holders listed on the back page.



*Optional 1-1/4 Heating Coil

EZ-SHRINK-EZ3K COIL 32MM
Required for 1" and 1-1/4" Holders

Additional \$500.00



↓↓ Select your package below ↓↓

CAT40

Package for only:

\$5,500

CAT50

Package for only:

\$6,100

DBT30*

Package for only:

\$5,800

BT40

Package for only:

\$5,800

HSK63A

Package for only:

\$5,900

HSK100A

Package for only:

\$6,200

STRAIGHT SHANK**

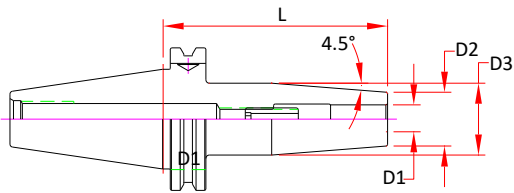
Package for only:

\$5,600

*DBT30 is Dual Contact for Face Contact Spindles, may work in standard spindle if the spindle conforms to JMTBA MAS403.

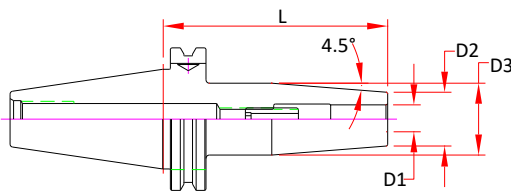
** Straight Shank Package includes (1) CAT40 Base and (1) Straight Shank Adapter of your choice. See Tool Holding Systems Catalog for available adapter options.

All pricing shown in USD and do not include any taxes. International customers are subject to any and all duty's and additional taxes that may apply. International customers are responsible for freight charges from warranty claims. Limited time only. All prices subject to change without notice. Contact our customer service department for details and pricing.



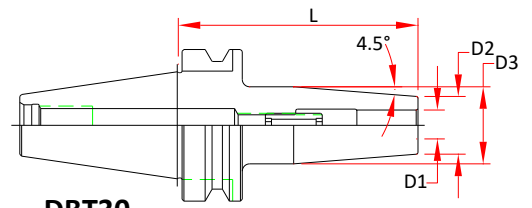
CAT40

Part Number	D1	D2	D3	L
CAT40-SD025-080	0.2500	0.83	1.06	3.15
CAT40-SD031-080	0.3125	0.83	1.06	3.15
CAT40-SD037-080	0.3750	0.94	1.26	3.15
CAT40-SD043-080	0.4375	0.94	1.26	3.15
CAT40-SD050-080	0.5000	0.94	1.26	3.15
CAT40-SD062-080	0.6250	1.06	1.34	3.15
CAT40-SD075-080	0.7500	1.30	1.65	3.15
CAT40-SD100-100*	1.0000	1.73	2.09	3.94
CAT40-SD125-100*	1.2500	1.73	2.09	3.94



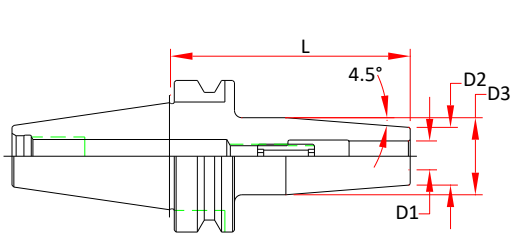
CAT50

Part Number	D1	D2	D3	L
CAT50-SD025-080	0.2500	0.83	1.06	3.15
CAT50-SD031-080	0.3125	0.83	1.06	3.15
CAT50-SD037-080	0.3750	0.94	1.24	3.15
CAT50-SD050-080	0.5000	0.94	1.24	3.15
CAT50-SD062-080	0.6250	1.06	1.34	3.15
CAT50-SD075-080	0.7500	1.30	1.61	3.15
CAT50-SD100-100*	1.0000	1.73	2.09	3.94
CAT50-SD125-100*	1.2500	1.73	2.09	3.94



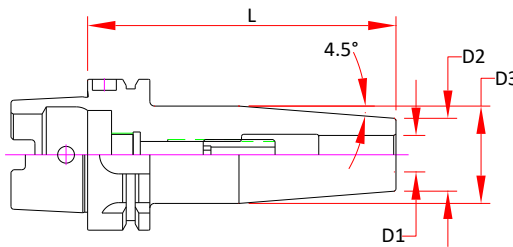
DBT30

Part Number	D1	D2	D3	L
DBT30-SD025-080	0.2500	0.83	1.06	3.15
DBT30-SD031-080	0.3125	0.83	1.06	3.15
DBT30-SD037-080	0.3750	0.94	1.26	3.15
DBT30-SD050-080	0.5000	0.94	1.26	3.15
DBT30-SD062-080	0.6250	1.06	1.34	3.15
DBT30-SD075-090	0.7500	1.30	1.65	3.54



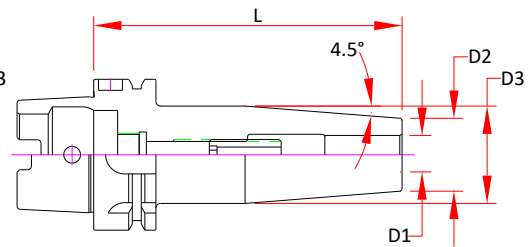
BT40

Part Number	D1	D2	D3	L
BT40-SD025-090	0.2500	0.83	1.06	3.54
BT40-SD031-090	0.3125	0.83	1.06	3.54
BT40-SD037-090	0.3750	0.94	1.26	3.54
BT40-SD050-090	0.5000	0.94	1.26	3.54
BT40-SD062-090	0.6250	1.06	1.34	3.54
BT40-SD075-090	0.7500	1.30	1.65	3.54
BT40-SD100-100*	1.0000	1.73	2.09	3.94
BT40-SD125-100*	1.2500	1.73	2.09	3.94



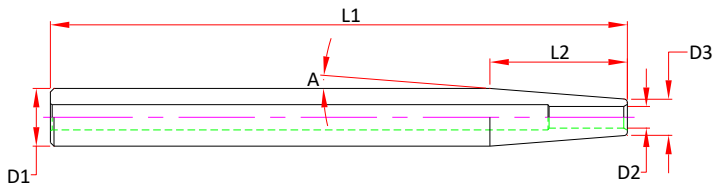
HSK63A

Part Number	D1	D2	D3	L
HSK 63A-SD025-080	0.2500	0.83	1.06	3.15
HSK 63A-SD037-085	0.3750	0.94	1.06	3.35
HSK 63A-SD050-090	0.5000	0.94	1.26	3.54
HSK 63A-SD062-095	0.6250	1.06	1.34	3.74
HSK 63A-SD075-100	0.7500	1.30	1.65	3.94
HSK 63A-SD100-115*	1.0000	1.73	2.09	4.53
HSK 63A-SD125-120*	1.2500	1.73	2.09	4.72



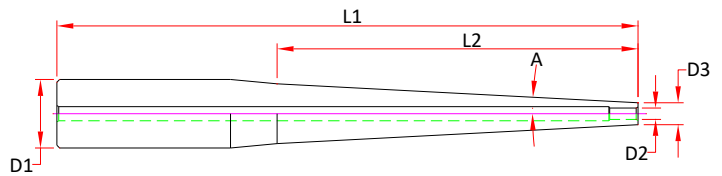
HSK100A

Part Number	D1	D2	D3	L
HSK100A-SD025-085	0.2500	0.83	1.06	3.35
HSK100A-SD031-085	0.3125	0.83	1.06	3.35
HSK100A-SD037-090	0.3750	0.94	1.24	3.54
HSK100A-SD050-095	0.5000	0.94	1.26	3.74
HSK100A-SD062-100	0.6250	1.06	1.34	3.94
HSK100A-SD075-105	0.7500	1.30	1.61	4.13
HSK100A-SD100-115*	1.0000	1.73	2.09	4.53
HSK100A-SD125-120*	1.2500	1.73	2.09	4.72



Straight Shank—Metric

Part Number	D1	D2	D3	L1	L2	A
S12-SD03-160	12	3	8	160	25.4	4.5°
S12-SD04-160	12	4	8	160	25.4	4.5°
S16-SD03-160	16	3	10	160	38.1	4.5°
S16-SD04-160	16	4	10	160	38.1	4.5°
S16-SD05-160	16	5	10	160	38.1	4.5°
S16-SN06-140	16	6	9	140	67	3°
S16-SD06-160	16	6	10	160	38.1	4.5°
S20-SD06-160	20	6	14	160	38.1	4.5°
S20-SD08-160	20	8	14	160	38.1	4.5°
S25-SD10-160	25	10	20	160	31.8	4.5°
S25-SD12-160	25	12	20	160	31.8	4.5°
S25-SD14-160	25	14	20	160	31.8	4.5°
S25-SD16-160	25	16	22	160	19.1	4.5°



Straight Shank—Inch

Part Number	D1	D2	D3	L1	L2	A
S037-SN012-0315	0.3750	0.1250	0.24	3.15	-	2.8°
S037-SN018-0315		0.1875	0.31			1.5°
S050-SN025-0315	0.5000	0.2500	0.37	8.00	3.95	2.8°
S075-SN012-0800	0.7500	0.1250	0.24			8.00
S075-SN018-0800		0.1875	0.31	8.00	-	2.9°
S075-SN025-0433	0.7500	0.2500	0.37	4.33	25.6	3.0°
S075-SN025-0800		0.2500	0.37	8.00	-	2.5°
S075-SN031-0433	0.7500	0.3125	0.43	4.33	1.00	3.0°
S075-SN037-0433		0.3750	0.49	4.33	1.00	3.0°
S100-SD025-0800	1.0000	0.2500	0.49	8.00	1.65	3.0°
S100-SD031-0800		0.3125	0.55	8.00	1.65	3.0°
S100-SN037-0800	1.0000	0.3750	0.49	8.00	3.82	3.0°
S100-SD037-0800		0.3750	0.61	8.00	1.65	3.0°
S100-SN050-0610	1.0000	0.5000	0.62	6.10	1.63	2.9°
S100-SD050-0800		0.5000	0.81	8.00	1.43	2.5°
S100-SN050-0800	1.0000	0.5000	0.62	8.00	3.82	2.0°
S100-SD050-0800		0.5000	0.62	8.00	3.82	2.0°

PIONEER N.A., INC. Premium Tool & Work Holding

641 Fargo Ave., Elk Grove Village, IL 60007

sales@PioneerNA.com | 847-593-6000 | www.PioneerNA.com